

# **The Hine project: results of the eHospital Census**

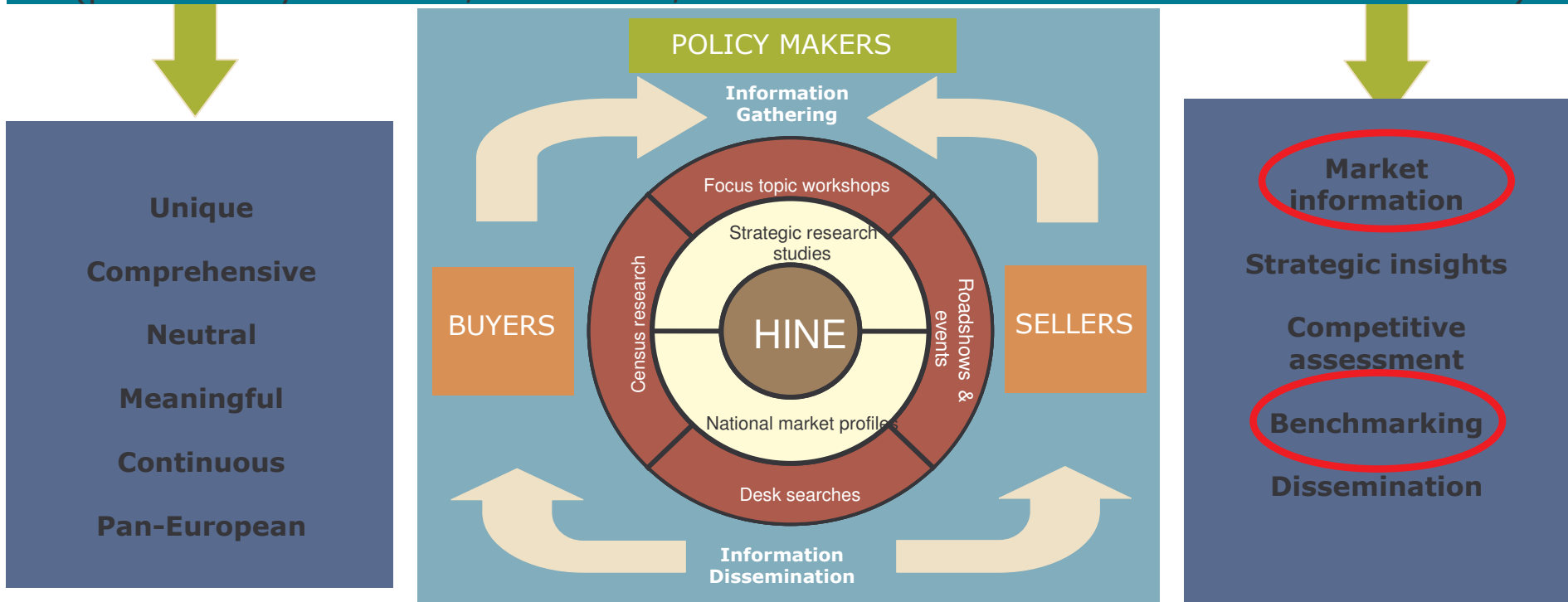
**Ingrid Moldenaers**  
**Deloitte**  
**Good eHealth project manager**  
**HINE project manager**

**[imoldenaers@deloitte.com](mailto:imoldenaers@deloitte.com)**

**+ 32 (0)2 800 28 71**

# Strategic objectives for HINE

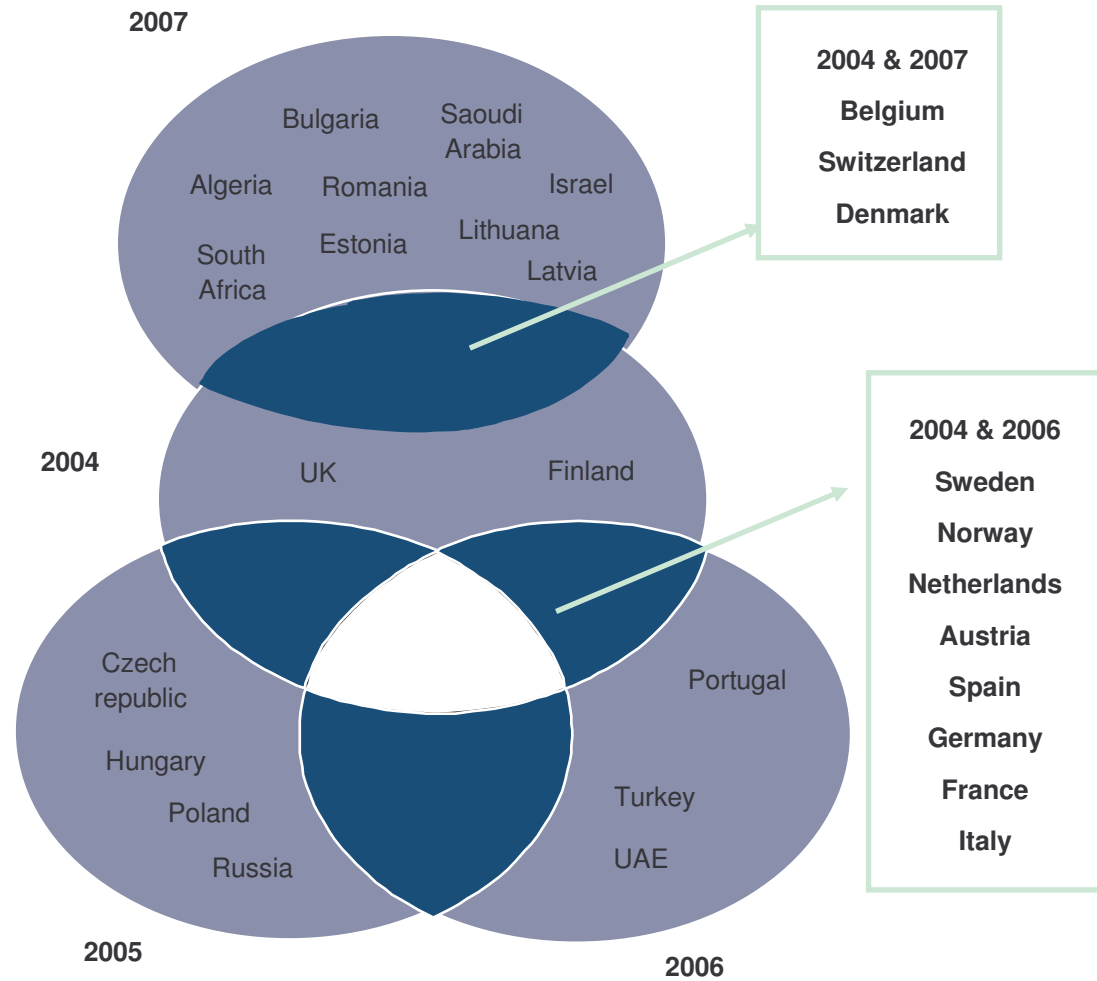
**MISSION OF HINE**  
*Assist its subscribers in FOSTERING eHealth roll-out*  
by means of  
one stop access to key eHealth information  
(present day situation, evolutions, future needs & demands of all relevant actors)



**HINE provides unique, neutral and valuable strategic and business insights regarding eHealth for the benefit of and under the supervision of the HINE Governing Board**

# Essentials of the HINE eHospital Census exercise

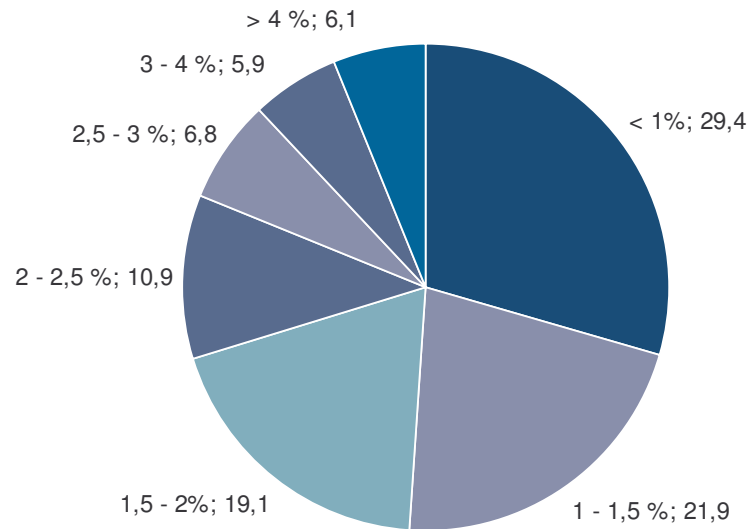
- Survey of general acute hospitals (> 100 beds)
- Started in 2004 – ongoing initiative
- Countries covered
  - Focus on 2006 results (720 hospitals)
  - Comparison 2004 results (900 hospitals)
- Focus on a limited number of questions



# ICT spending in European hospitals 2004 - 2006

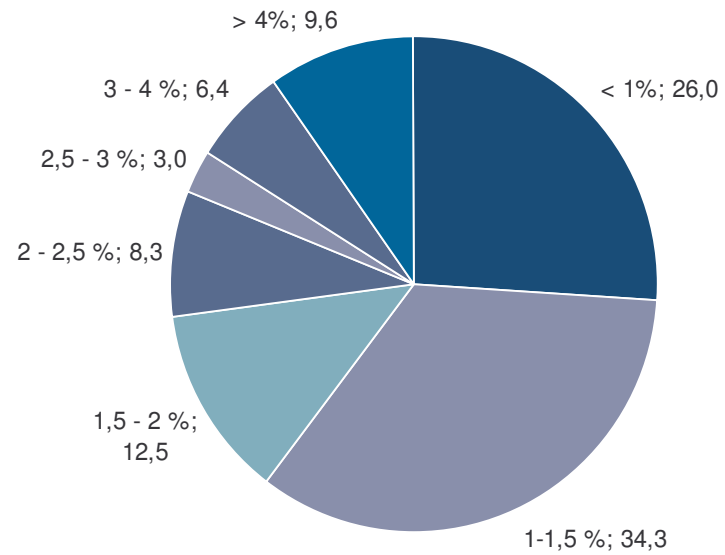
## IT department budget as part of the whole hospital budget

2004



Source: Hine eHospital Census 2004

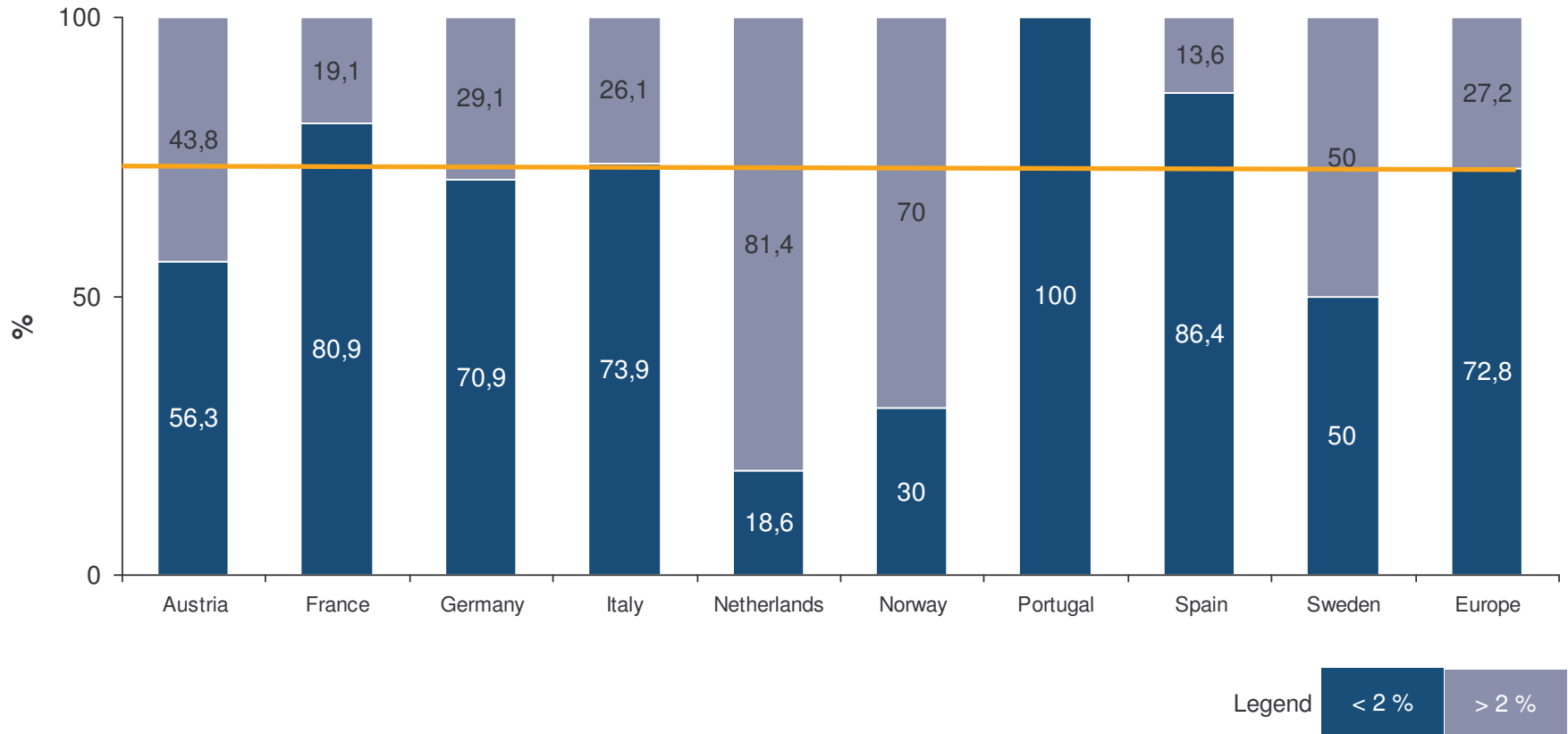
2006



Source: Hine eHospital Census 2006

# ICT spending 2006 – country data / aggregated data

IT department budget as part of the whole hospital budget



Source: HINE eHospital Census 2006

# Factors driving IT investments now / in the next three years

<b>E hospital Census 2004</b>	<b>Current situation 2004</b>	<b>Expectations for 2005/2007</b>
	<ul style="list-style-type: none"> <li>▪ <b>Meeting legal requirements</b></li> <li>▪ Reducing avoidable medical errors</li> <li>▪ Facilitate sharing of patient information</li> <li>▪ Comply with government funded policies</li> <li>▪ Improve security and privacy provisions</li> </ul>	<ul style="list-style-type: none"> <li>▪ <b>Meeting legal requirements</b></li> <li>▪ Reducing avoidable medical errors</li> <li>▪ Facilitate sharing of patient information</li> <li>▪ Increase clinical capacity and productivity</li> <li>▪ Improve security and privacy provisions</li> </ul>
<b>E hospital Census 2006</b>	<b>Current situation 2006</b>	<b>Expectations for 2007/2009</b>
	<ul style="list-style-type: none"> <li>▪ <b>Improve access to care and reduce waiting list</b></li> <li>▪ <b>Enhance overall organisation performance</b></li> <li>▪ Support reorganisation and change</li> <li>▪ Create more effective supply chain links</li> <li>▪ Improve overall quality of care</li> </ul>	<ul style="list-style-type: none"> <li>▪ <b>Improve access to care and reduce waiting list</b></li> <li>▪ <b>Enhance overall organisation performance</b></li> <li>▪ Support reorganisation and change</li> <li>▪ Create more effective supply chain links</li> <li>▪ Improve security and privacy provisions</li> </ul>

Source: HINE eHospital Census 2004 & 2006

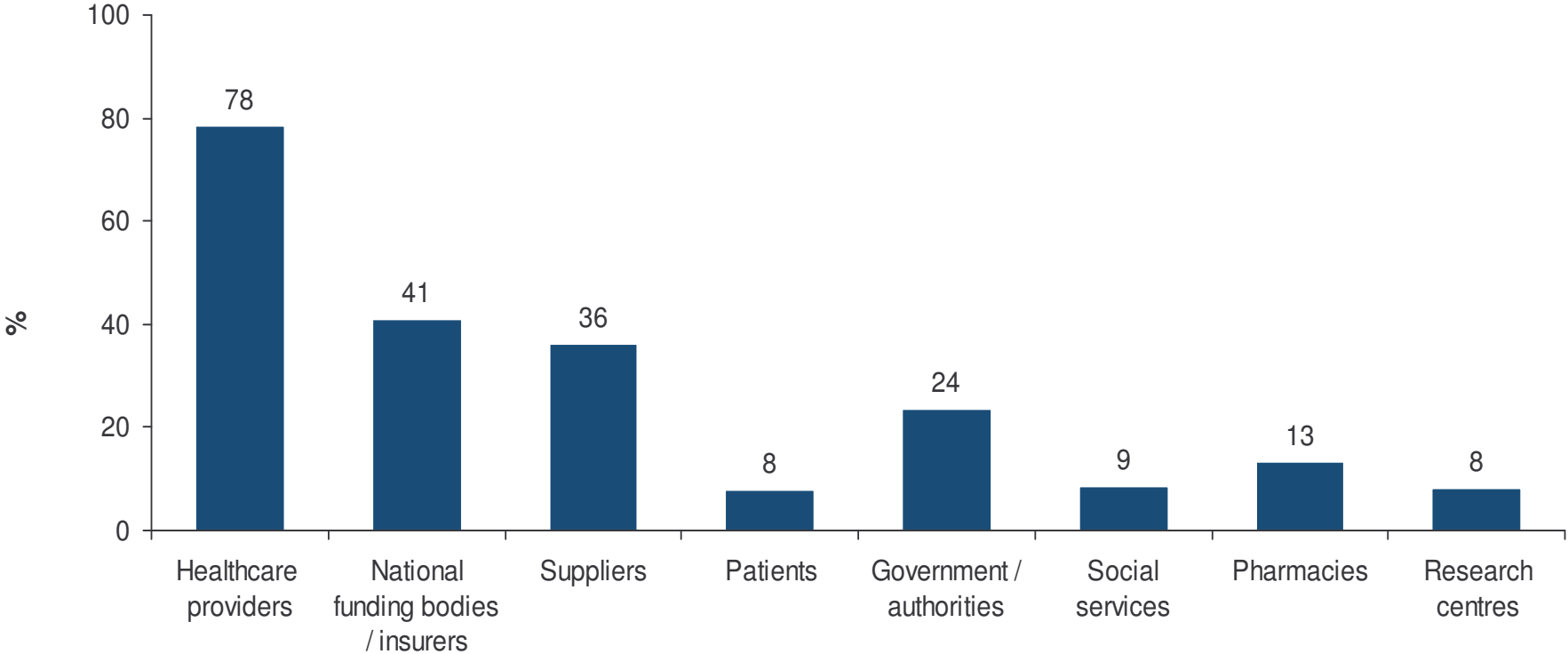
# Current & future integration



Source: eHospital Census 2006

# Integration – organisations targeted by external connection currently

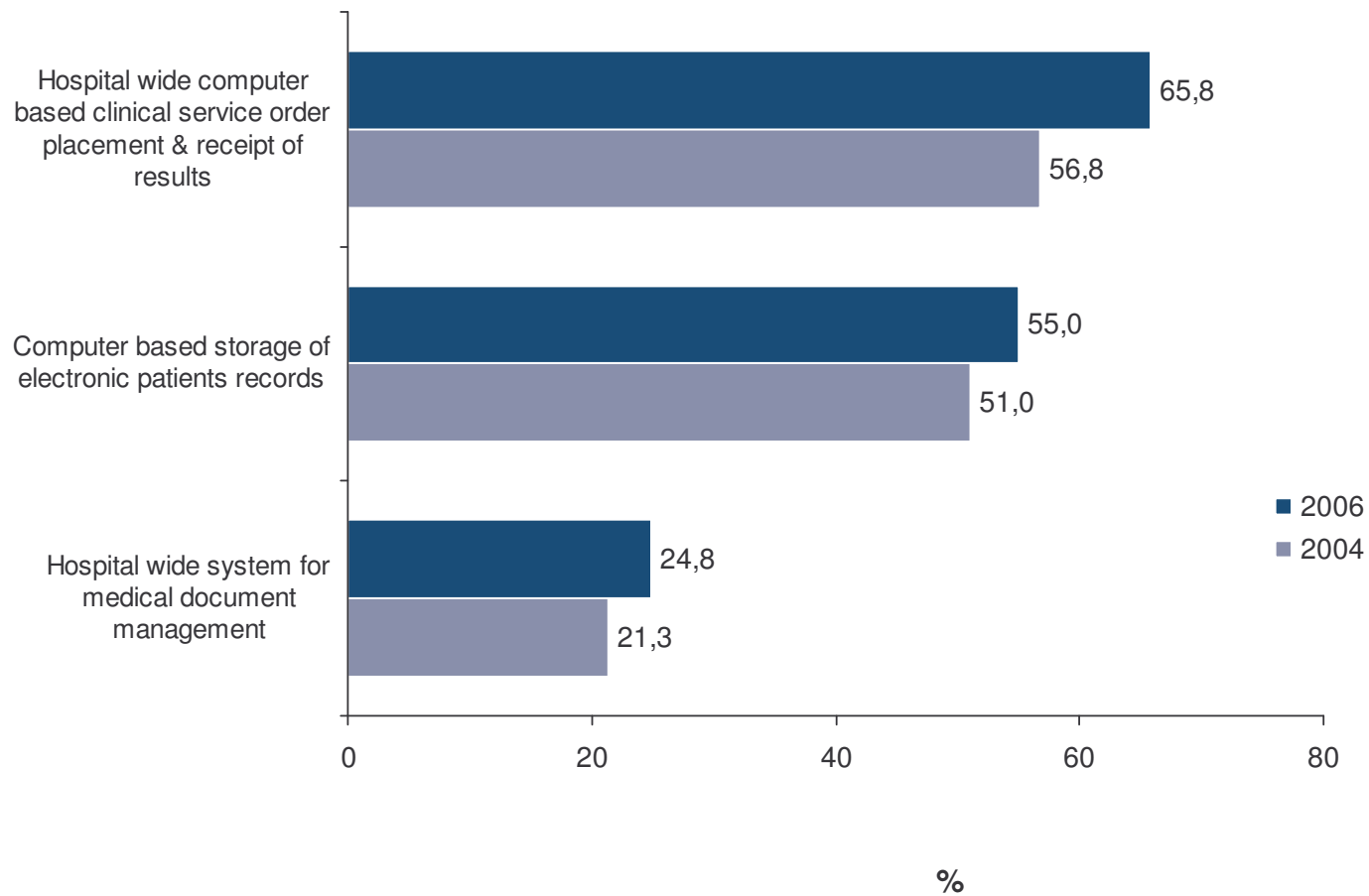
Connected to organisations in the wider health care community 60,4 % of which





# European Hospital EPR systems installed base 2004 - 2006

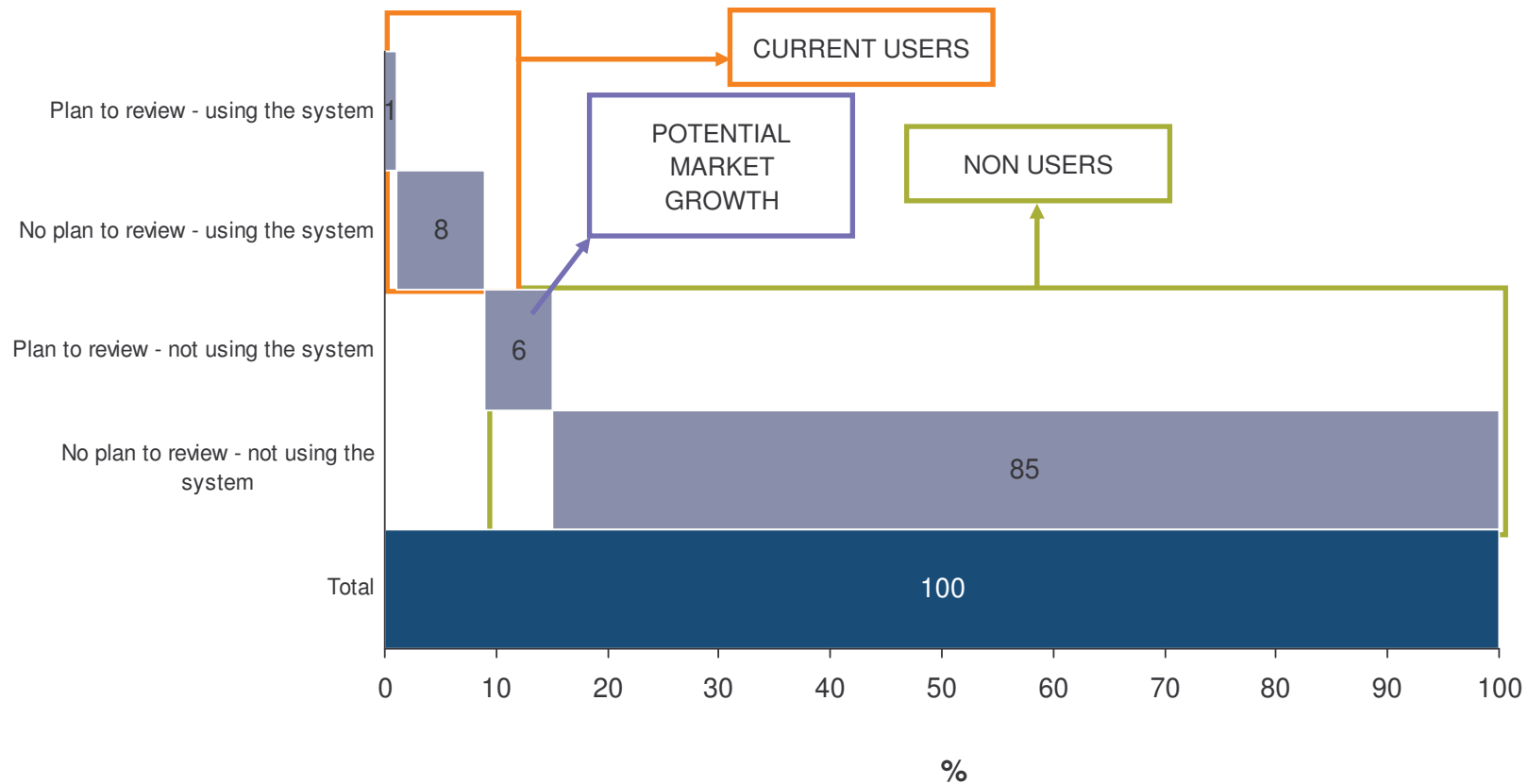
## Functionalities of EPR



Source: Hine eHospital Census 2004 / 2006

# E Learning applications in European hospitals 2006

## Current installations – plans for future



Source: Hine eHospital Census 2006